

DA 02



The smallest of the SIKO Digital Position Indicators. Designed to fit on axes where space is restricted. Ideal for all applications where standard SIKO counters turn out to be too big.

Features

- small size
- for shaft diameters of 6 to 10 mm
- min. distance between the axes = 19 mm

Technical data

Counter:	3 decades	Weight:	0.02 kg
Digit size:	approx. 4 mm	Colour of housing:	orange RAL 2004
Hollow shaft [ø mm]:	10 ^{H7} mm	Ambient temperature:	+ 80°C max.
Housing:	High Impact Polyamide 6		

For Ordering Information, contact:

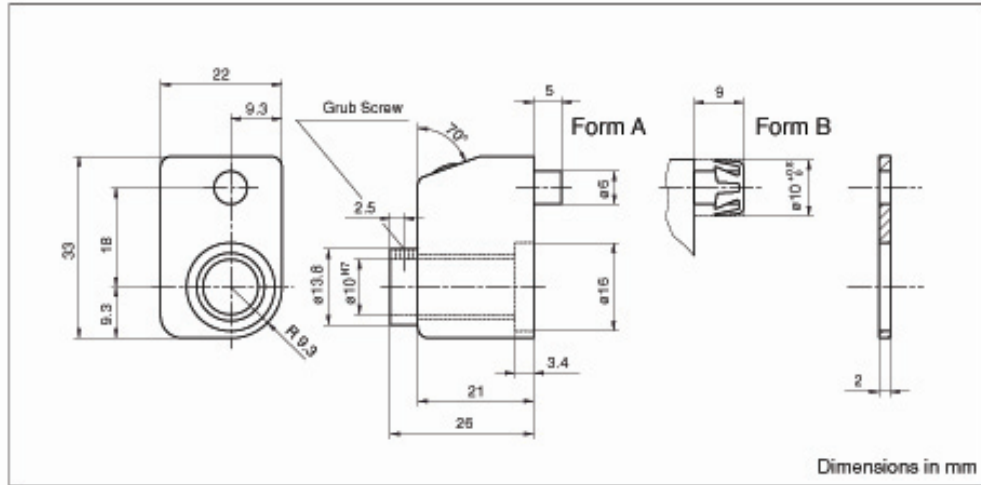
Wood Tech Enterprises, Inc.
1-800-Tooling (866-5464)

or 1.828.628.4414
Fax: 1.828.628.4490

Pitch (mm)	Display after 1 revolution (comma position)			Max. speed (r/min)
0.75	00.7/5	0.07/5	007/5	1500
1	01.0	0.10	010	1500
1.25	01.2/5	0.12/5	012/5	1200
1.5	01.5	0.15	015	1000
1.75	01.7/5	0.17/5	017/5	850
2	02.0	0.20	020	750
2.5	02.5	0.25	025	600
3	03.0	0.30	030	500
4	04.0	0.40	040	375
5	05.0	0.50	050	300
6	06.0	0.60	060	250
8	08.0	0.80	080	180
10	10.0	1.00	100	150

Note: Speeds above 500 r/min for short periods only. Other spindle pitches on request.
Values indicated after „/“ are calculation values only and not displayed.

DA 02



Dimensions in mm

Display	Version / mounting position			

Count. direction	Reducing sleeve
	 $\varnothing 10^{H7} - 6, 8$

For Ordering Information, contact:

Wood Tech Enterprises, Inc.
 1-800-Tooling (866-5464)
 or 1.828.628.4414
 Fax: 1.828.628.4490

Basic ordering data Options: if blank, standard is supplied.

Ordering code **DA02-0- - - -RH- - -**

Type DA02 _____

Version / mounting position _____

Display after one revolution _____

Decimal places 0 to 2
 Eg. 0 = 000 1 = 00.0 2 = 0.00

Counting direction
 I = clockwise increasing, E = counter-clockwise increasing

Hollow shaft bore
 10^{H7} (standard), < 10 use reducing sleeve RH.. (see table on page 24)

Colour of housing
 O = orange (standard)

Torque pin
 A = type A (standard), B = Form B