

DA 04



Small Digital Indicator with easily-read display and vernier scale. Designed for tightly spaced axes and small spindle diameters.

Options

- Intermediate plate to accept setting collar and radial seal.
- Hollow shaft diameter: 15 mm max.
- Inch display of metric pitches. The entire value is used for internal calculation, but not displayed. Display value and additional calculation values are separated by „/“.
Example: 4 mm = 0.15748 Inch;
Display value 00.15; additional values for calculation .../748
- Mineral glass viewing window, solvent resistant
- Stainless steel driving shaft
- Axial seal (dust proof)

Technical data

Counter: 4 decades, vernier scale
Digit size: approx. 6 mm
Hollow shaft [ø mm]: 14^{H7} mm
Housing: High Impact Polyamide 6

Weight: 0.05 kg
Colour of housing: orange RAL 2004
black RAL 9005
grey RAL 7035
Ambient temperature: max. + 80°C

For Ordering Information, contact:

Wood Tech Enterprises, Inc.
1-800-Tooling (866-5464)

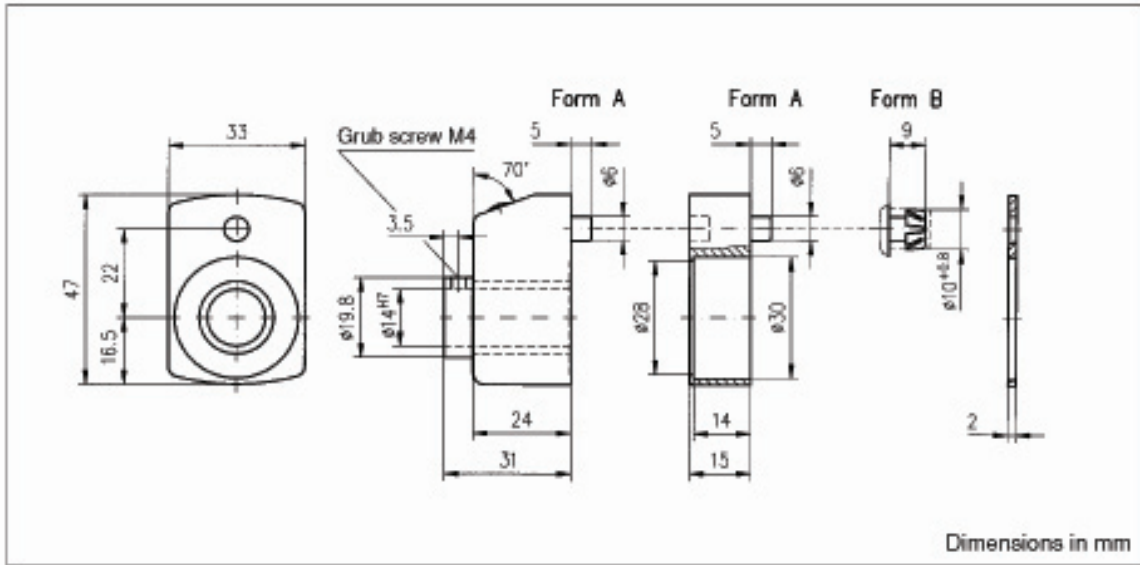
or 1.828.628.4414
Fax: 1.828.628.4490

Pitch (mm)	Display after 1 revolution (comma position)			Max. speed (r/min)
1.0	001.0	00.10	0010	1500
1.25	001.2/5	00.12/5	0012/5	1200
1.5	001.5	00.15	0015	1000
1.75	001.7/5	00.17/5	0017/5	850
2	002.0	00.20	0020	750
2.5	002.5	00.25	0025	600
3	003.0	00.30	0030	500
4	004.0	00.40	0040	375
5	005.0	00.50	0050	300
6	006.0	00.60	0060	250
8	008.0	00.80	0080	180
10	010.0	01.00	0100	150

Note: Speeds above >500 r/min for short periods only. Other spindle pitches on request.
Values indicated after „/“ are calculation value only and not displayed.

DA 04

For Ordering Information, contact:
 Wood Tech Enterprises, Inc.
 1-800-Tooling (866-5464)
 or 1.828.628.4414
 Fax: 1.828.628.4490



Display	Version / mounting position			
<p>Vernier scale</p>	<p>02</p>	<p>04</p>	<p>06</p>	<p>07</p>

Count. direction	Reducing sleeve	Axial seal	Locking lever	Intermediate plate
<p>E I</p>	<p>$\phi d^{H7} = 6, 8, 10, 12$</p>	<p>See mounting instructions!</p>	<p>unlocked locked Vibration protection M=20 Ncm</p>	

Basic ordering data Options: if blank, standard is supplied.

Ordering code DA04 **DA04** - **0** - [] - [] - [] - **RH** - [] - [] - [] - [] - []

Version / mounting position _____

Display after one revolution _____

Decimal places 0 to 3 _____
 Eg. 0 = 0000 1 = 000.0 2 = 00.00

Counting direction _____
 I = clockwise increasing, E = counter-clockwise increasing

Hollow shaft diameter _____
 14^{H7} (standard), < 14 use reducing sleeve RH... (see table on page 24)

Colour of housing _____
 O = orange (standard), S = black, GR = grey

Torque pin _____
 A = type A (standard), or type B

Viewing window _____
 K = plastic (standard), M = mineral glass

Axial seal _____
 OAD = without (standard), AD = with

Intermediate plate _____
 ZOP = without (standard), ZP = with