

DE 09

Programmable Position Indicator - the electronic equivalent to the DA09, the world's most popular mechanical indicator.

Features

- Resolution 0.01 mm for pitches up to 10 mm
- Display with sign for negative values
- Absolute display
- Suitable as angle display (resolution 0.5 °)
- Incremental measurement function (relative dimension)
- Battery-powered (battery life approx. 6 years)
- Hollow through shaft
- Simple push fit onto machine spindle; with torque pin
- Dimensionally similar to DA 09
- Suitable for different mounting positions

Accessories

- Programming software PROSO DE09

Display	Version / mounting position			
	02 	04 	06 	07

Technical data

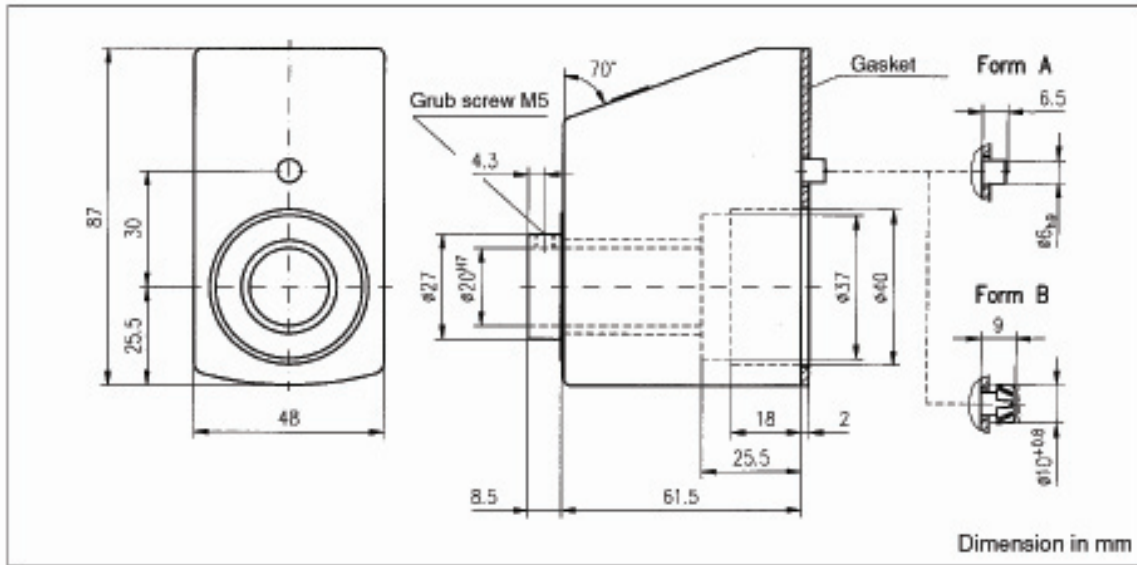
Display:	LCD, 5-digit (7 mm)	Speed [rpm]:	max. 600 (100 % ED) max. 1500 (intermittently)
Display range:	-9999 to 99999 (absolute) -9999 to 9999 (relative)	Shaft load:	radial: max. 20 N axial: 10 N
Battery:	Lithium cylinder cell 3 V, type CR 17335, battery life approx. 6 years	Working temperature:	+ 5 to +50 °C
Housing:	plastic (PPO GFN 2), glass-fibre reinforced	Storage temperature:	-20 to +70 °C
Colour of housing:	black	Vibration allowed:	10 g (5 to 150 Hz) accord. to DIN IEC 68-2-6 20 g (100 to 2000 Hz)
Weight:	170 g	Shock allowed:	30 g (15 ms) accord. to DIN IEC 68-2-27
Hollow shaft [ø mm]:	20 ^{H7} , friction bearing	Noise immunity:	interference protection class 3, accord. to IEC 801-3
		Test mark:	CE-sign

For Ordering Information, contact:
Wood Tech Enterprises, Inc.
1-800-Tooling (866-5464)

or 1.828.628.4414
Fax: 1.828.628.4490

DE 09

SIKO Digital Position Indicator



Reducing sleeve	Axial seal	Count. direction
<p>$\varnothing 20^{\text{H}7}$ = 8, 10, 12, 14, 16, 18</p>	<p>See mounting instructions!</p>	<p>E I</p>

For Ordering Information, contact:
 Wood Tech Enterprises, Inc.
 1-800-Tooling (866-5464)
 or 1.828.628.4414
 Fax: 1.828.628.4490

Ordering code **DE 09** - [] - [] / [] - [] - [] - **RH** - [] - [] - [] - []

Type DE 09

Version / mounting position

Display after one revolution*
 5 – 1080 (1 digit step by step),
 1080 – 2160 (2 digits step by step),
 3600 (angle mode, resolution 0.5°)

Calculation value
 Max. 5 further positions which are programmed,
 but not displayed (eg. for unusual inch values)

Decimal place 0 to 4*
 Eg.: 0 = 00000 1 = 0000.0 2 = 000.00

Counting direction*
 I = clockwise increasing, E = counter-clockwise increasing

Hollow shaft bore
 20^{H7} (standard), <20 use reducing sleeve RH... (see table page 24)

Colour of housing
 S = black (standard), O = orange

Incremental measurement function
 0 = without, 1 = with

Torque pin
 A = type A (standard) or B

Axial seal
 OAD = without (standard), AD = with

* Customer-specific programming is marked by "...".